

# SSA SERIES

## FIRE & SMOKE DAMPER ACTUATOR

**3 Point Non Spring Return Control**  
**10 Nm**

### SSA...10S SERIES

SSA Non-Spring Return actuators are developed for use with fire and smoke damper. The actuator motorized the damper or other devices when power on.



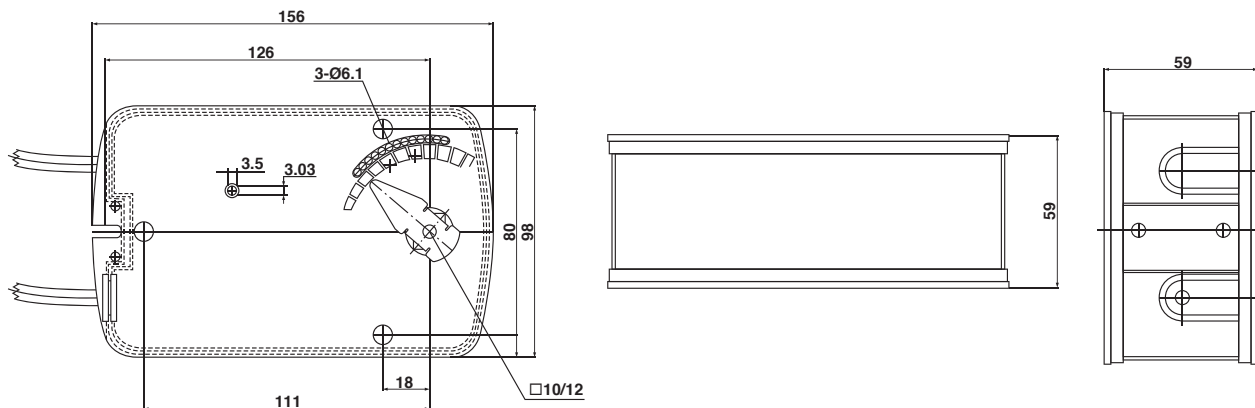
### PRODUCT FEATURE

- Torque 10 Nm
- Damper size 2.0 m<sup>2</sup>
- Power supply AC/DC 24V and AC 230 V
- Shaft dimensions - Form fit 12 mm square
- Adapter supplied for Form fit 8 or 10 mm square
- Selectable direction of rotation of reversing actuator
- Actuator with 1 m cable connection
- 2 Fixed auxiliary switches
- Manual Over-ride by crank handle when required
- Anti-rotation bracket provided for stability

### MODEL SELECTION TABLE

MODEL / TYPE	TORQUE	POWER SUPPLY	RUNNING TIME	AUXILIARY SWITCHES
SSA 1-10S	10 Nm	AC/DC 24 V $\pm$ 10%	< 30 sec	2 x SPDT (Fixed)
SSA 2-10S	10 Nm	AC 230 V $\pm$ 10%	< 30 sec	2 x SPDT (Fixed)

## DIMENSION (mm)



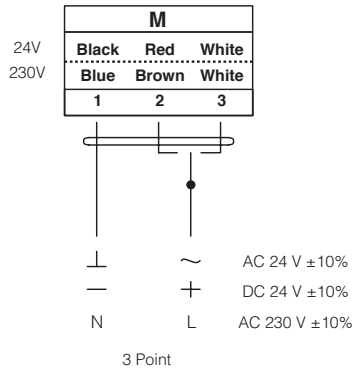
## TECHNICAL SPECIFICATION

MODEL NUMBER	SSA 1-10S	SSA 2-10S
TORQUE	10 Nm	10 Nm
DAMPER SIZE	2.0 m <sup>2</sup>	2.0 m <sup>2</sup>
SHAFT DIMENSION	Form fit 12 mm square	Form fit 12 mm square
POWER SUPPLY	AC/DC 24 V ± 10%	AC 230 V ± 10%
FREQUENCY	50...60 Hz	50...60 Hz
CONTROL SIGNAL	3 point control	3 point control
POWER CONSUMPTION		
● OPERATING	7.2 W	4.2 W
● END POSITION	2.5 W	2.5 W
FOR WIRE SIZING	10.0 VA	10.0 VA
ELECTRICAL CONNECTION	1 m Cable	1 m Cable
AUXILIARY SWITCHES RATING	3 (1.5) A, AC 250 V	3 (1.5) A, AC 250 V
PROTECTION CLASS	Class III ⚡	Class II ⚡
ANGLE OF ROTATION	90° (95° mechanical)	90° (95° mechanical)
WEIGHT	1.8 Kg	1.9 Kg
LIFE CYCLE	60,000 Rotation	60,000 Rotation
SOUND LEVEL	45 dB	45 dB
IP PROTECTION	IP54	IP54
OPERATING TEMPERATURE	-20°...50° as per IEC 721-3-3	-20°...50° as per IEC 721-3-3
NON-OPERATING TEMPERATURE	-30°...+60° C / IEC 721-3-2	-30°...+60° C / IEC 721-3-2
AMBIENT HUMIDITY	5%...95% rH non condensing / EN	5%...95% rH non condensing / EN
MAINTENANCE	Maintenance Free	Maintenance Free
MODE OF OPERATION	Type I / EN 60730-1	Type I / EN 60730-1
EMC	CE, UL 873 & ISO 9000 EN / EEC	CE, UL 873 & ISO 9000 EN / EEC

# SSA SERIES FIRE & SMOKE DAMPER ACTUATOR

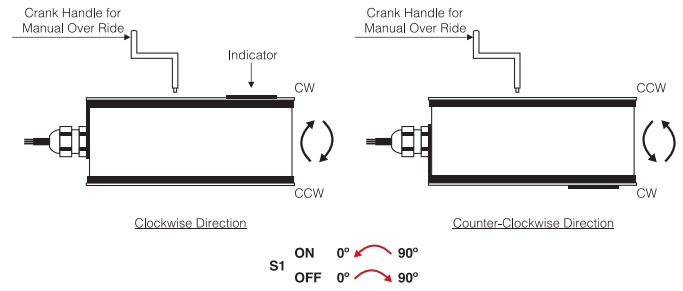
**3 Point Non Spring Return Control  
10 Nm**

## WIRING DIAGRAM SSA...10S POWER SUPPLY AC/DC 24 V / AC 230V

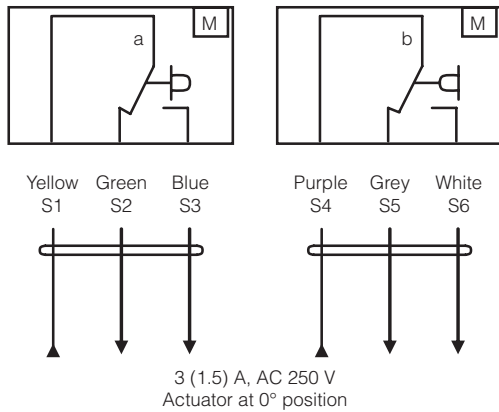


⚠ Connect via safety isolating transformer

## DIRECTION OF ROTATION SSA...10S

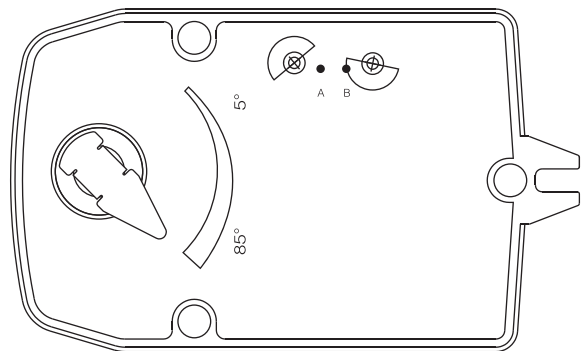


## WIRING DIAGRAM SSA...10S AUXILIARY SWITCHES

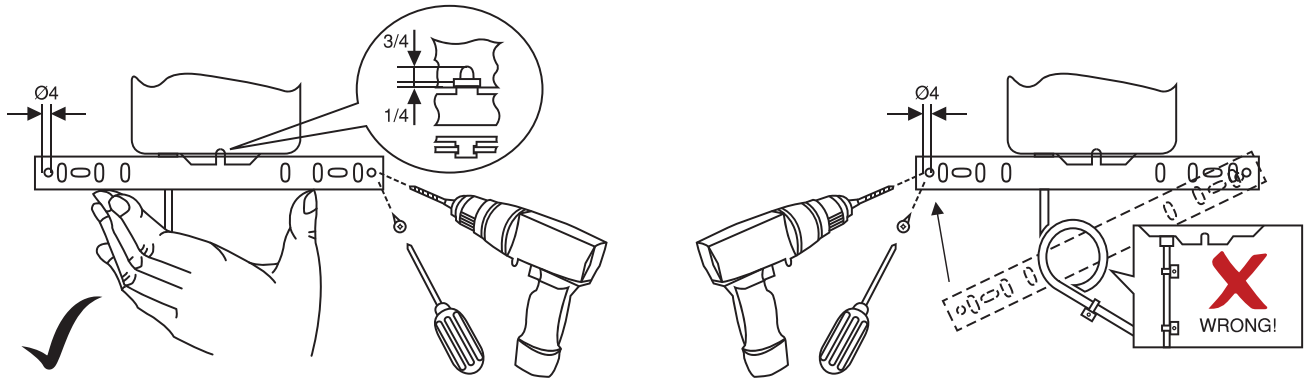


## AUXILIARY SWITCHES SSA...10S

Auxiliary are fixed at 5° for switch **(a)** and 85° for switch **(b)**  
Auxiliary switches are non adjustable.






## INSTALLATION / MOUNTING INSTRUCTION



### IMPORTANT REMARK

For special requirement, consult your local Swisotec's representative.

  This actuator includes electrical and electronic components and may not be disposed as household garbage. Please consider the local valid legislation.

 AC / DC 24 V: Connect via safety isolating transformer.  
AC 230 V: To isolate from the main power supply, the system must incorporate a device which disconnects the phase conductor (with at least a 3mm contact gap.)

The performance specifications are nominal and conform to acceptable industry standards. Swisotec shall not be liable for damages resulting from misapplication or misuse of its products.